

꿈이 이루어지는
따뜻한 행복도시 김해



GBIA

GIMHAE BIOMEDICAL &
INDUSTRY PROMOTION AGENCY



김해 의생명·산업진흥원



Beyond Limit, Better Life

For a better life beyond the limit!

“Gimhae Biomedical Industry Promotion Agency,” which is the partner for realization of the value of biomedical industry and the foothold organization to lead innovative growth of small/medium enterprises, draws a new future of Gimhae, the Gayawandgo.

Contents

President's Message	04
History	06
Organization	08
Vision & Mission	09
Global	10
Facility I	12
Facility II	28
MOU	48



“We will do our best to develop the biomedical industry and revitalize the local economy.”



Greetings!

I am Tae-yong Hong, Mayor of Gimhae, Chairman of the Gimhae Biomedical Industry Promotion Agency.

The Gimhae Biomedical Industry Promotion Agency was reborn in 2021 following a series of monumental precedents: Starting with the Gimhae Next Generation Biomedical Industry Support Center in 2006, the opening of the Gimhae Small and Medium Enterprise (SME) Business Center in 2015, and the integrated launch of the Gimhae Biomedical Industrial Promotion Foundation in 2017.

Since its inception, the Agency has been conducting various biomedical industry-related projects. Also, it has been driving the development of the biomedical industry in the Southeast by accumulating know-how in the field of biomedicine, expanding related infrastructure, and rapidly growing and concentrating medical-related companies.

Gimhae City plans to lead Korea's biomedical field by leaping to the 'top four biomedical hub cities' in the country by collaborating with various organizations such as the government, companies, universities, and hospitals in the past COVID-19 pandemic era. The Gimhae Biomedical Industry Promotion Agency will lead the way.

In addition, we are taking an active role in revitalizing the Gimhae region's economy by fostering regional innovative strategic industries through the discovery of future industries and providing various corporate support. Such support includes fostering small and medium-sized enterprises, startup support, and domestic and overseas marketing support.

In the future, we plan to implement various policies such as establishing and operating the Gimhae corporate information system and systematically discovering and implementing new businesses to realize an 'innovative economic city'.

In conclusion, Gimhae City and the Gimhae Biomedical Industry Promotion Agency will do our best to develop the biomedical industry and revitalize the local economy. We look forward to your continued interest and support.

Thank you.

Chairman of the Gimhae Biotechnology Industry Promotion Agency

Tae-yong Hong

We will contribute to the development of the biomedical industry and become an institute that fulfills the role of a customized support center for companies!!



The Gimhae Biomedical Industry Promotion Agency is a hub for fostering future strategic industries through efforts like expanding R&D capabilities in the biomedical industry, supporting companies and startups, and strengthening regional innovation capabilities. As such, it leads the development of the medical industry in the Southeast.

If you are researching, producing, or starting a new medical device, or if you are a company looking to shift your business to the medical industry, please feel free to visit us.

We hope that you will make good use of the medical industry research and production infrastructure and the network of industry, academia, research institutes, government offices, and hospitals that the Gimhae Biomedical Industry Promotion Agency has built and accumulated to help your company grow.

In addition, as a base institution leading the innovative growth of SMEs in Gimhae City, it conducts various policies such as fostering regional innovation strategic industries by discovering future new industries, supporting customized growth of SMEs and strengthening competitiveness. It also strives to promote startups and job creation through the creation of a startup ecosystem.

If you are in need of fostering small and medium-sized enterprises, export support, domestic and international marketing support, small business support, and startup support, please feel free to knock on the door of the Agency.

We look forward to your continued interest and support so that we can continue to play the role of a promotional center that actively contributes to the development of the biomedical industry and provides customized support for companies.

Thank you.

President of the Gimhae Biomedical Industry Promotion Agency

Sung-ho Park

Our challenges and passion have led to the innovation of Gimhae's economic structure!

Every step GBIA takes becomes a new history!



2009-2010

- Jun 2009**
Selected as a project to build a High-Tech Biomedical Techno Town (Ministry of Knowledge Economy)
- Jul 2010**
Selected for the Regional Linkage Industry Development Project (Global Dental Brand Development Project)
- Oct 2010**
Selected as the Best Center for Specialized Center Management Evaluation 2009-2010

2011

- Dec 2011.**
Selected as a National Center of Excellence by the Ministry of Knowledge Economy Management Evaluation for 2 consecutive years

- Dec 2011**
Selected as the Gyeongsangnam-do Mosaic Project (established a business center)

2005-2008

- Jun 2005**
Confirmed for the Regional Innovation Business Infrastructure Construction Project (Ministry of Trade, Industry and Energy)
- May 2006**
Established the Gimhae Next Generation Biomedical Convergence Industry Support Center
- Nov 2008**
Opened the Gimhae Biomedical Industry Agency
- Established 38 types of equipment specializing in biomedicine

Gimhae Biomedical Industry Agency



2012-2015

- Oct 2012**
Opened a High-Tech Biomedical Techno Town
- Oct 2013**
Launched 'RealDent', a global co-brand for dentistry
- Apr 2014**
Opened the Solopreneur Business Center



- Nov 2015**
Opened the Gimhae Small and Medium-Sized Enterprise (SME) Business Center



2016-2019

- Apr 2016**
Selected as the Commercialization Project for the Convergence of Medical Devices based on Intelligent Machines
- Apr 2017**
Selected as the Grassroots Entrepreneurship Project
- Jul 2018**
Launched the Gimhae Biomedical Business Council
- Sep 2018**
Opened the Gimhae-Harvard Bioimaging Center
- Dec 2018**
Signed an MOU with national biomedical organizations



- Apr 2017**
Established the Gimhae Industrial Promotion Biomedical Convergence Foundation [Gimhae Biomedical Industry Agency and Gimhae SME Business Center merged]
- May 2017**
Selected as a leading project for fostering neighborhood markets
Opened the Technology Startup Center for the Middle-Aged
- Jan 2019**
Established a startup support team within the Business Center
- Mar 2019**
Selected as the Regional Cluster-Hospital Startup Incubation Support Project
- Jun 2019**
Implemented the Gimhae's Small Business Development Project
- 2019. 06.**
Designated as the Special R&D Zone for Biotechnology and Medical Devices

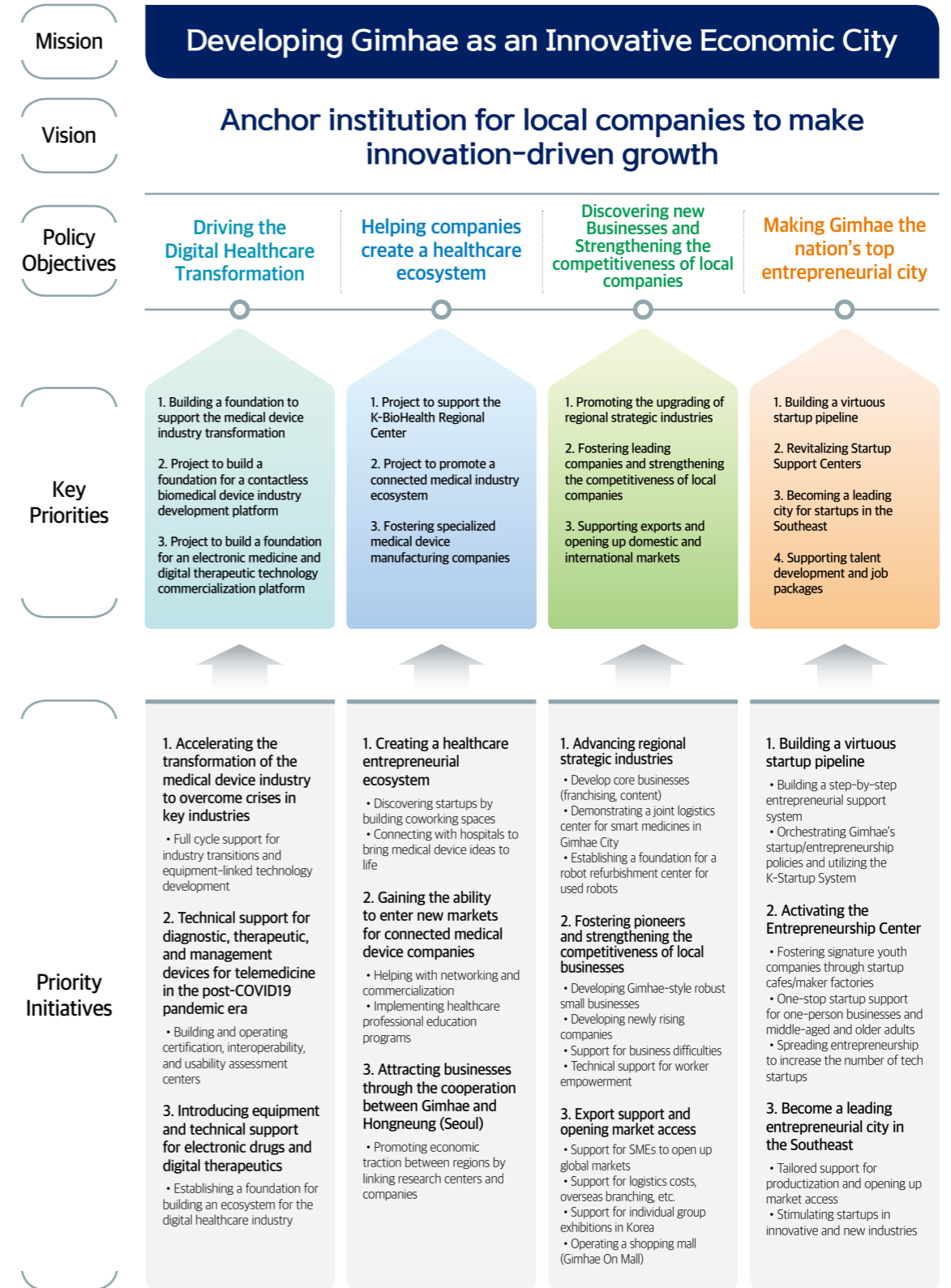
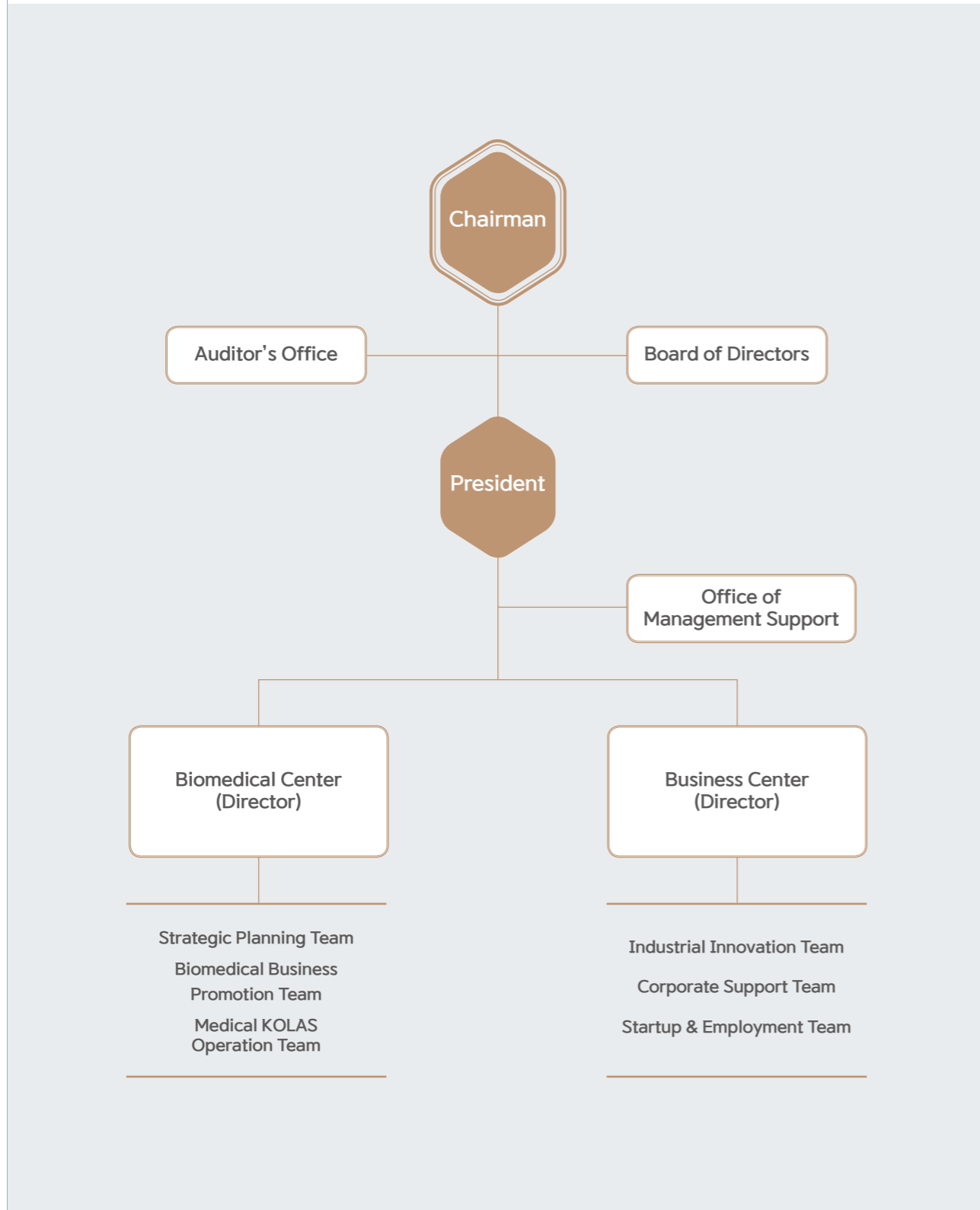
2020-2023

- Jul 2020**
Completed the construction of the Medical Commercialization Center
- Feb 2021**
Launched the Gimhae Biomedical Industry Promotion Agency
- Dec 2021**
Created the Strategic Industry Team



Gimhae SME Business Center

- Jan 2022**
Operated directly the Startup Cafe Promotion Center
- Feb 2022**
Selected as a project to commercialize electronic medicine and digital therapeutic device technology
- May 2022**
Selected as a local-led youth job project
Selected as a project to build a platform to foster the contactless medical device industry
- Jul 2022**
Directly managing the Gyeongsangnam-do Province TP Machinery Parts Center Promotion Center



From Local to Global

The Gimhae Biomedical Industry Promotion Agency looks beyond the region to the world. We have shared advances we have made in technology, showcased our companies' excellence, and fostered the development of new technologies with the world's leading organizations.



Attending International Conventions

Since 2006 when we visited MEDICA in Germany, we have participated in major international conventions in the biomedical industry. These conventions include the ARAB Health, an international medical device exhibition in Dubai, the Medical Fair in Asia (MFA) held in Thailand, the International Dental Exhibition and Meeting (IDEM) in Singapore, and HOSPITALAR or the Medical Fair Brasil, a medical device exhibition held in Brazil. Through this, we try to grasp the development trends of advanced medical devices and provide opportunities for our companies to advance in overseas markets.

International Agreements

We have signed business agreements with overseas research institutes and companies in the biomedical industry through various channels. International cooperation, such as the 2016 agreement with the Gordon Medical Imaging Center at Harvard University Medical School in the United States, will continue to play a major role in Gimhae's growth as a global biomedical manufacturing powerhouse.

Support for international expansion

Thanks to GBIA's support, companies in Gimhae are growing to produce world-class products. We plan to establish a more systematic system to support the companies so that they can secure global competitiveness and showcase their technology on the world stage.

Nurturing export powerhouses

Through various corporate support projects such as overseas exhibitions, overseas branching, and export insurance premiums to develop overseas sales of promising export SMEs in the region, we foster export powerhouses that lead the overseas export market and drive the local economy.



For Better Life

Gimhae Biomedical Industry Promotion Agency

A hub for fostering future strategic industries!

The Gimhae Biomedical Center leads the development of Gimhae's medical industry in line with the era of 'step-by-step daily recovery'. For this purpose, it expands the existing biomedical industry infrastructure and research and development capabilities. Also, it innovates research facilities and equipment aiming to develop and promote biomedical businesses.





VISION

Objectives

Building a global biomedical hub

- Creating a growth ecosystem for the advanced biomedical convergence industry
- Enhancing the competitiveness of the biomedical industry by fostering leading companies
- Revitalizing local economies and creating jobs by specializing in the biomedical industry

Creating a Biomedical Cluster VISION

2005-2009 Stage 1

2010-2016 Stage 2

2017-2021 Stage 3

2021-2025 Stage 4

2026-2030 Stage 5

2005-2009 Stage 1
Center Establishment / R&D
 Medical devices/ Materials/Supplies

2010-2016 Stage 2
Medical manufacturing facilities / GMP
 Recycled equipment/ Dental supplies

2017-2021 Stage 3
Medical commercialization Center
 Medical supplies / Rehabilitation
R&D Special Zone for Biomedical Devices

2021-2025 Stage 4
Digital Healthcare
 Electronic medicine, Digital therapeutic devices
 Contactless medical devices
Specialized Medical Device Manufacturing Cluster

2026-2030 Stage 5
Global Center for the Advanced Biomedical Industry
Medical Data-Based Demonstration Services

Biomedical Center Building



- **Year Established** | 2008
- **Project Cost** | 13.4 billion KRW
- **Size** | 17,886 m² of land, 3,587 m² of gross floor area
- **Tenants** | 20 companies
- **Equipment Size** (equipment value) | 10 types, 871 million KRW

Technotown Building



- **Year Established** | 2012
- **Project Cost** | 21.8 billion KRW
- **Size** | 6,016 m² of land, 8,924 m² of gross floor area (1 basement, 8 floors)
- **Tenants** | 26 companies
- **Equipment Size** (equipment value) | 4 types, 2413 million KRW

Medical Commercialization Building



- **Year Established** | 2020
- **Project Cost** | 29.9 billion KRW
- **Size** | 3,300 m² of land, 7,237 m² of gross floor area (1 basement, 7 floors)
- **Tenants** | 15 companies
- **Equipment Size** (equipment value) | 47 types, 8,117 million KRW





Gimhae Biomedical Cluster

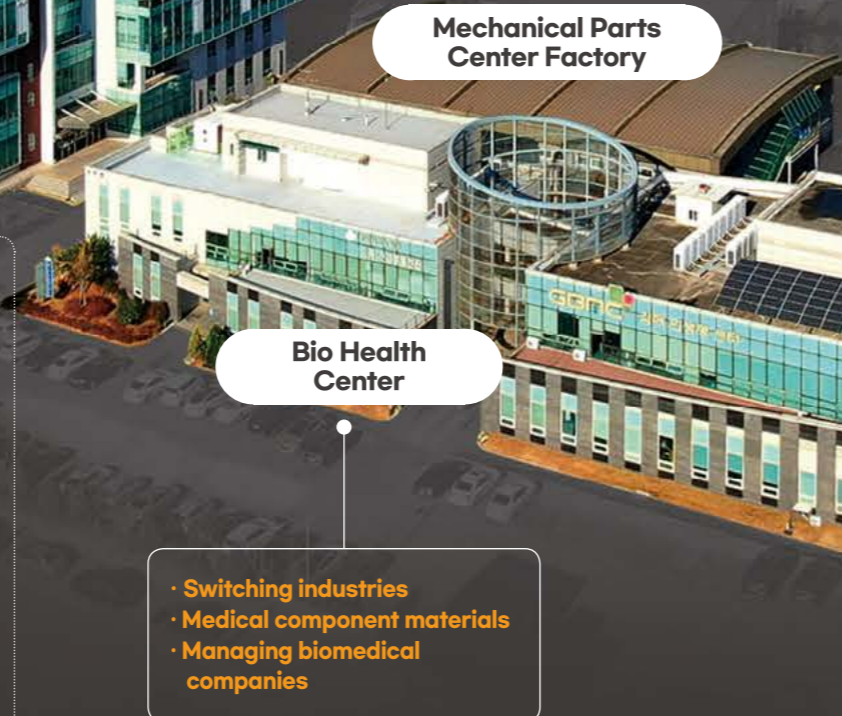
Major Facilities and Functions



Technotown Building

- Contactless Biomedical Device Support Center (FITI test lab to move in)
- Medical Device GMP Specialized Manufacturing Cluster (Supporting the development of medical devices)
- K-Gimhae Regional Strategy Center (Korea Health Industry Promotion Agency)
- K-Region Biomedical Shared Office
- K-Cell Gene Company: AffyXell Therapeutics
- BioActs BM&S
- BioActs

Integration of Medicines



Mechanical Parts Center Factory

- Switching industries
- Medical component materials
- Managing biomedical companies

- Identify new infrastructure businesses
- Identify new infrastructure businesses
- Contactless / e-drug / AI content



Biomedical Center

- Industry Transition Support Center (Equipment Room & Conference Room)
- Connect with support for promising technologies
- Implementing the Smart Transition on the full scale (2021~2023)

- 5F - 7F Biomedical device company tenants
- 4F Nanofiber Production Room (GMP)
Polymer Materials Development Lab
Hydrogel Production Room (GMP)
- 3F EO Gas Sterilization Chamber (ISO 13485)
Prototyping Lab
Microbiology Lab (KOLAS)
Performance Evaluation Lab
- 1F Rehabilitation Device Biomechanics Lab
Rehabilitation Device Production Support Lab

Medical Commercialization Center

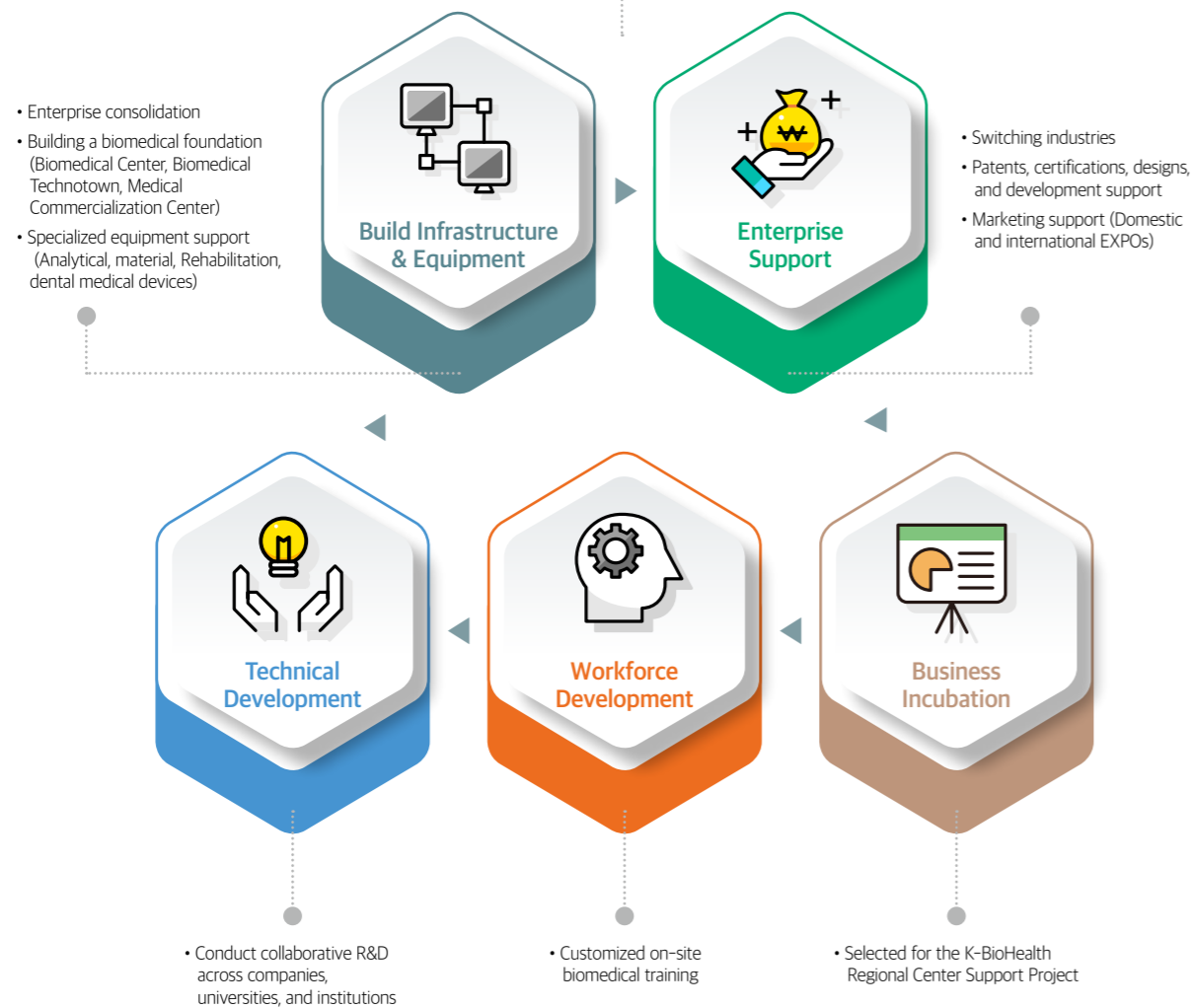
Integration of Medical Devices



GBIA Functions of the Gimhae Biomedical Center



Gimhae Biomedical Industry Promotion Agency
Gimhae Biomedical Center



GBIA Major Projects of the Gimhae Biomedical Center



Equipment Technical Support

- Technical and prototyping support for medical device material development
- Technical support for usability evaluation and biomechanical analysis of rehabilitation devices
- Technical support for medical device testing/performance evaluation and licensing consulting

GMP/ISO 13485

- International standard certification for medical device export
- Support for overseas export of pre-production products
- Provide international standard medical device sterilization service (EO gas sterilization)

Technology Commercialization

- Operate a big data-based technology commercialization platform
- Provide corporate capability diagnosis and global market competitiveness assessment report
- Provide promising item discovery report

KOLAS Accreditation

- KOLAS accredited laboratories (International)
- Perform microbiological testing of sterilized medical devices
- Issue internationally recognized test reports

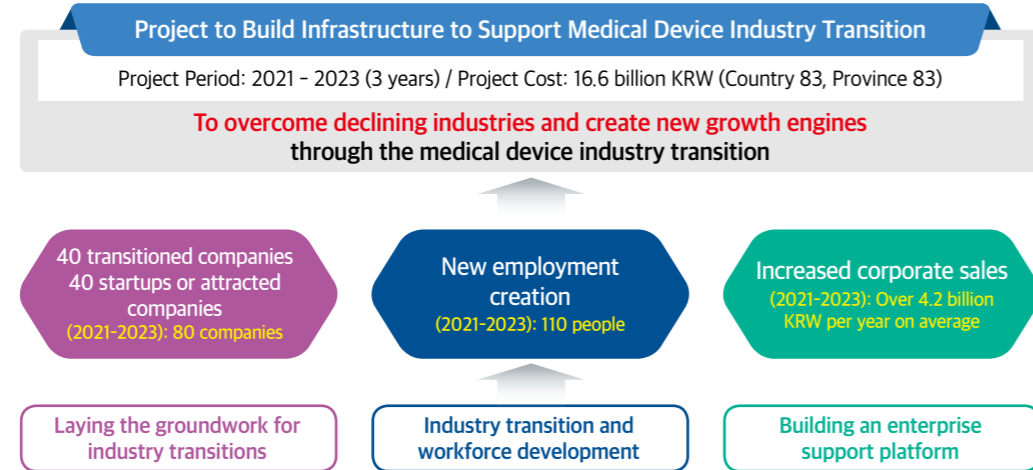


GBIA
Major Projects of the Gimhae Biomedical Center

Inquiries : 055-310-1410

01 Project to Build Infrastructure to Support Medical Device Industry Transition

Business Vision & Goals



Implementation System



Identify success stories and potential for demand generation by promoting industry transition support projects

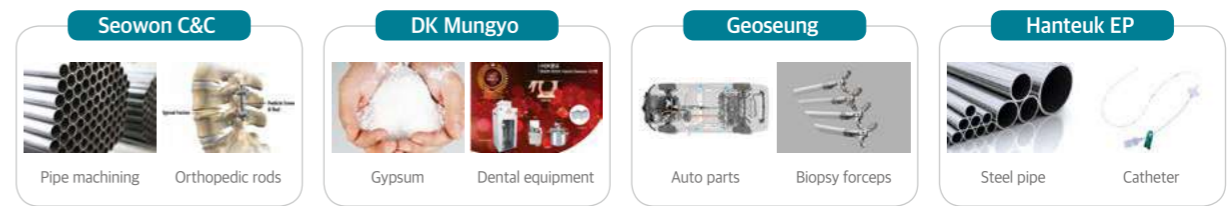
✓ Gyeongsangnam-do promotes the 'Project to Support Companies for the Medical Device Industry Transition' and is supporting a total of 34 projects
- Employed 85 people, generated 5.8 billion KRW in sales, 36 intellectual property rights, and 34 medical device prototypes

Performance & Evaluations

Year	Companies Supported	Employment Growth (persons)	Sales (million KRW)	Intellectual property applications and registrations (cases)	Prototypes (cases)
Total	34	85	5,830	36	34
2016	4	10	1,381	3	4
2017	12	29	1,363	18	12
2018	9	26	1,325	7	9
2019	9	20	1,761	8	9

Examples of Industry Transitions

- Pipe machining → Orthopedic rods [Sewon C&C]
- Gypsum → Dental equipment [DK Mungyo Co., Ltd.]
- Auto parts → Biopsy forceps [Geoseung]
- Steel pipe → Catheter [Hanteuk EP]
- Electronic components → Implant molding machines [Jeonggwan]
- STS wire and welding rods → Medical wire [Corel]
- Pipe modules and powder metallurgy → Metal parts for human implants [Yoo Seung]
- Mechanical manufacturing → Dental equipment [KLE&G Co., Ltd.]
- Semiconductor components → Orthopedic body correction device [Harness Co., Ltd.]
- Cutting and similar processing → Respiratory medical devices [3S Co.,Ltd.]



Go to the Gyeongnam Medical Device Industry Transition Support Platform



02 Project to establish a platform to foster the contactless biomedical device industry

Project Period April 2022 - December 2026 (4 years and 8 months) **Project Cost** 12,550 million KRW (National 5,000, province 1,500, city 5,500, private in-kind 550)

Regional Governments **Project Operator**

Participating Organizations

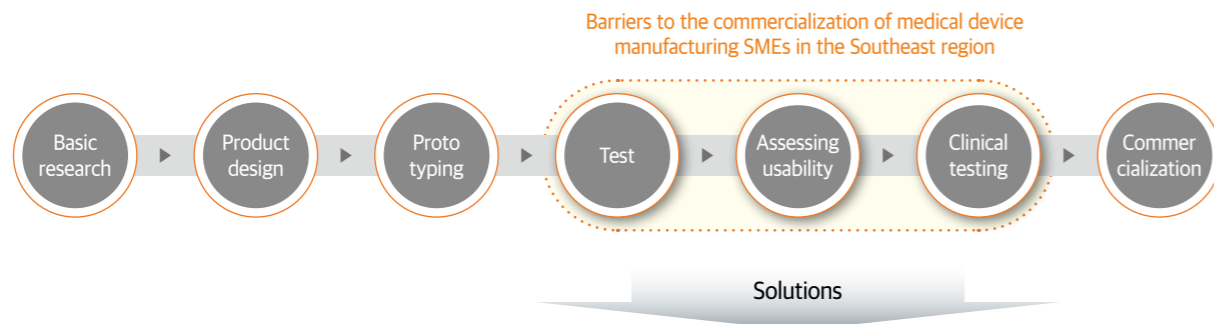
Breakdown of the Project Cost	Total	National Budget	Provincial Budget	Municipal Budget	In-Kind
	1255	50	15	55	5.5
	100%	39.8%	12%	43.8%	4.4%

Total 12,550 million KRW

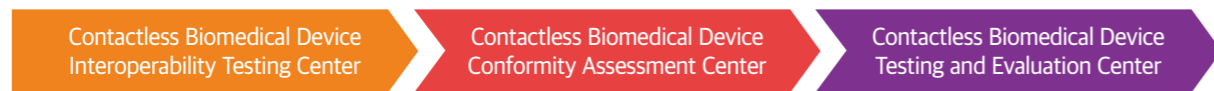
Vision & Goals To establish infrastructure for the development of contactless digital healthcare system technology and service demonstration to foster the contactless biomedical device industry

- Attracting startups and companies (2022-2026) : 60 companies
- Enterprise support (2022-2026) : 214 cases
- Creating new jobs (2022-2026) : 81 persons
- Contactless medical device clearance (2022-2026) : 15 cases

Difficulties in the commercialization of promising domestic companies that produce contactless biomedical devices



Direct support through foundation building



Establishing interoperability tests and testing systems based on HL7, FHIR, C-CDA, and medical device communication standards



Establishing an operation and evaluation system for medical device conformity to international standards (ISO62366-1)



Establishing and validating a test evaluation foundation for the commercialization and licensure of contactless medical devices

03 Project to establish a platform for the commercialization of electronic medicine and digital treatment device technology

Vision To establish a one-stop support platform for electronic medicine and digital therapeutic technology from product planning to commercialization support

Goals (1) Establish a foundation for the development of the electronic medicine and digital therapeutics industry (2) Support the development of electronic medicine and digital therapeutics based on corporate demand (3) Expand cooperation networks to support electronic medicine and digital therapeutics

Project Period April 2023 - December 2025 (33 months)

Total Project Cost	Total	National Budget	Local Budget	Private
	83.75	50	30	3.75
	100%	58.9%	35.6%	5.5%

Total 8,375 million KRW

Regional Governments

Project Operator

Participating Organizations

Patient-customized rehabilitation devices



Hardware-based

- An electronic device that uses electrical signals from the lower brain and nerve cells to treat disease
- A portmanteau of electronic and pharmaceutical, it treats diseases through electrical stimulation instead of traditional drugs or injections

Independent software medical devices powered by artificial intelligence big data



Software-based

- Digital therapeutics are defined as software medical devices that provide evidence-based therapeutic interventions to patients to prevent, manage, or treat medical disorders or diseases.

Driving hardware-based electronics requires software skills

Digital therapeutics can grow in tandem with advances in e-medicine infrastructure and technology

04 K-BioHealth Regional Center Support Project

Project Period January 2022 - December 2024 (3 years)

Project Cost 1,300 million KRW (Government subsidy 700 million KRW, **matching fund 600 million KRW (46%)**)

Participating Organizations Inje University Busan Paik Hospital, Pusan National University Yangsan Hospital, Haedong Hospital, Kyung Hee Medical Center Educational Cooperation Central Hospital

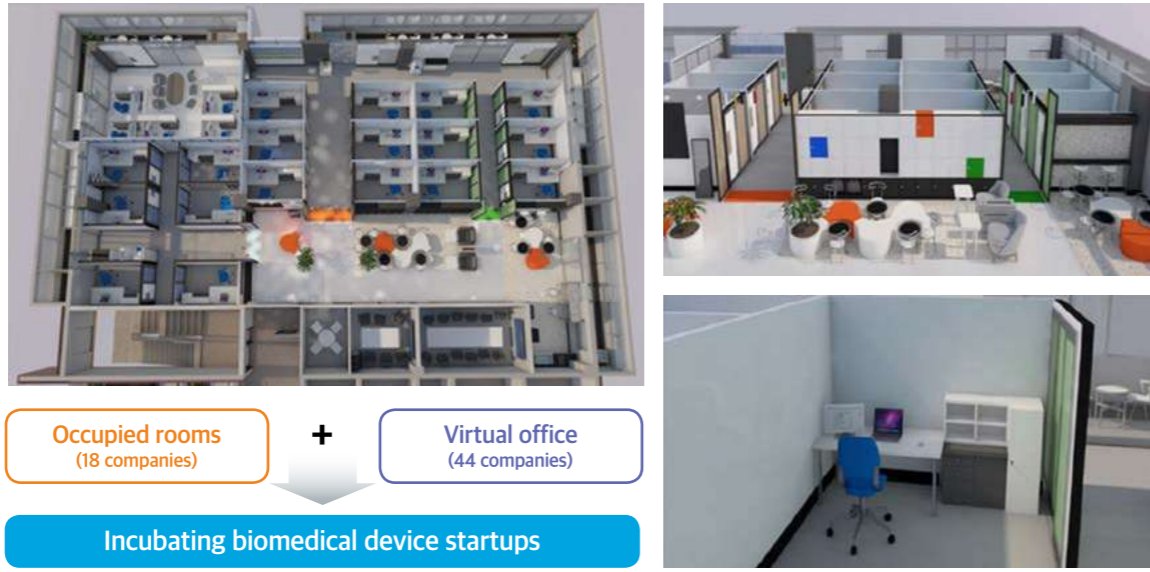
Support

<p>Enterprise Support</p> <p>Supporting startup idea discovery and technology commercialization (Entering the center + Consulting + Patent + Certification + Prototyping + Testing & Analysis + OEM/ODM)</p>	<p>Hospital-Connected Support</p> <p>Focus on hospital-connected support (Hospital-company joint product development + usability evaluation + clinical trials, etc.) Open laboratory cooperation program Operation of hospital-specialized research groups</p>	<p>Industry-University-Research-Hospital Networks</p> <p>Operation of Industry-University-Research-Hospital collaborations Organize regular discussions on regional science and technology cooperation</p>	<p>Cooperation with K-BioHealth Strategy Center</p> <p>Strategy-regional center infrastructure-connected support Investment attraction Participating in conferences and exhibitions</p>	<p>Specialized Programs by Host Organizations</p> <p>Gimhae Regional Center opening ceremony Domestic and international marketing Consortium and meetings with participating companies Performance report</p>
-------------------------------------------------------------------------------------------------------------------------------------------------------------------------------------------------------------------------	-------------------------------------------------------------------------------------------------------------------------------------------------------------------------------------------------------------------------------------------------------------------------------	-----------------------------------------------------------------------------------------------------------------------------------------------------------------------------------------------------------------------	--------------------------------------------------------------------------------------------------------------------------------------------------------------------------------------------------------	----------------------------------------------------------------------------------------------------------------------------------------------------------------------------------------------------------------------------------

Foundation Competencies **No. 1 manufacturing capability in the country**

<p>Gimhae Biomedical Industry Promotion Agency Department of Biomedical Engineering, Inje University Gimhae SME Special Zone TLO Project LINC + Project</p>	<p>Southeast Region One-Person Enterprise Creation Center Senior Center, Creation Cafe Creation Innovation Center Business Center (Future) Knowledge Industry Center</p>	<p>경상남도 GYEONGNAM 김해시 GIMHAE 서울특별시 (connected with Hongneung Special District)</p>	<p>Korea Materials Research Institute Korea Electric Power Research Institute Korea Ceramic Technology Institute Korea Federation of Science and Technology Organizations Gyeongnam Technopark</p>
-----------------------------------------------------------------------------------------------------------------------------------------------------------------------------	------------------------------------------------------------------------------------------------------------------------------------------------------------------------------------------	--------------------------------------------------------------------------------------------	--------------------------------------------------------------------------------------------------------------------------------------------------------------------------------------------------------------------

Completing the construction of shared office at K-BioHealth Gimhae Regional Center




Occupied rooms (18 companies) + **Virtual office (44 companies)**

Incubating biomedical device startups

05 Project to support domestic and international marketing of the biomedical industry

This is the largest marketing support program for biomedical companies to develop sales and enter domestic and international markets. It supports participation in medical device EXPOs.



Domestic Supported participation in the Korea International Medical Equipment and Hospital Equipment Show (KIMES)
Established a 42-booth joint pavilion and supported exhibition marketing

International **International online and offline marketing support**
Supported participation in MEDICA in Dusseldorf, Germany
Established 8 booths, exhibition marketing support, and interpretation support

Supported participation in Thailand International Medical Device Exhibition
Established 6 booths, exhibition marketing support, and interpretation support





GBIA
Equipment of the Gimhae Biomedical Industry Promotion Agency

Inquiries concerning the use of equipment owned by the Gimhae Biomedical Center: : ☎ 055-310-1481~5

Gimhae Biomedical Center owns and provides advanced equipment to support R&D, prototyping, and performance improvement of small and medium-sized biomedical companies.

Equipment Deployment Status

Equipment Applications	Equipment Name/Model	Manufacturer
Medical Materials R&D Equipment	Ultrapure Distilled Water Production Unit / Direct Q-3	Millipore(USA)
	Fume Hood / GTH-180	JOTech (Korea)
	Rotary Vapor Deposition System / RV 8 V	IKA(Germany)
	UV Crosslinker / CL -1000	UVP(USA)
	Ultrasonic Cleaners / CPX8800H-B	Branson(USA)
	Electron Beam Crosslinker / EB Lab200	COMET(Switzerland)
	Kneader Reactor and Material Mixing Extruder / CRP 2.5 batch and DTS 25 + Twin Screw DTS 25	LIST(Switzerland)
	Surface Treatment Machine / AFS-IR6T	All for System (Korea)
	Prototype Equipment	Automatic Board Feeder and Post Process Loader / LD-300, UL-300
Shoulder Paste Screen Print / SMP400		Samsung Techwin (Korea)
Advanced Flexible Mounter (High Speed)/SM-411		Samsung Techwin (Korea)
Advance Flexible Mounter (Universal)/SM-421		Samsung Techwin (Korea)
Fast Mount Feeder Unit (High Speed) / SM-Feeder		Samsung Techwin (Korea)
Fast Mount Feeder Unit (Universal) / Tray-Feeder		Samsung Techwin (Korea)
2D Vision Inspection System / AI-500C		Samsung Techwin (Korea)
High Temperature Autoclave / SRF-3012N		Samsung Techwin (Korea)
Coating Machine / Roll to Roll		Seopung (Korea)
Implant Manufacturing Machine for Vision Correction / TE-50		Woojin Plaimm (Korea)
Core Machining Machine for Vision Correction / OPTOFORM80		Precitech(USA)

Equipment Applications	Equipment Name/Model	Manufacturer
Prototype Equipment	Robotic System for Vision Correction / DW-ALA-20	Easy ENG (Korea)
	Hydrogel-based medical device production system	SMEC (Korea)
	Smart Polymer Production System	SMEC (Korea)
	CNC Numerical Control Milling Machines / XD20II-V	Hanwha Precision Machinery Co., Ltd. (Korea)
	GMP Cleanroom	Daesung Techwin (Korea)
	High Volume Electrospunners and Versatile Film Lines / Nanospiner PE-550 and Nanospiner PE-550W	Inovenso(Turkey)
	Laser Cutter / CL-9060	Hyundai Technology (Korea)
	Multifunctional Machines / PUMA-MX1600/735	Doosan Machine Tools (Korea)
	Ethylene Oxide Gas Sterilizer / SS-03-1-ADT (3.0)	Iljin Engineering (Korea)
Evaluation - Analytical Instruments	PECVD System for CNT Fabrication / MPECVD	Woosin CryoVac Co., Ltd. (Korea)
	Field Emission Characteristics Measurement Equipment for CNT Manufacturing / JMV-F-3	Jungmin Vac (Korea)
	Biomarker Simultaneous Measurement System	SMEC (Korea)
	Ultraviolet Spectroscopy / Evolution 350	Thermo Fisher Scientific(USA)
	Universal Testing Machine / Zwick line Z5.0 TN	Zwick Roell(Germany)
	FDM Gait Analyzer / FDM 1.5	Zebris(Germany)
	Wireless Electromyography System / DTS-8CH	Noraxon(USA)
	Socket Type Pressure Distribution Meter / Pedar xf system	Novel(Germany)
	Pressure Distribution Treadmill Gait Analyzer / FDM-THM-S-2i	Zebris(Germany)
	3D Biomechanical Analysis System/ Vantage V8	VICON(UK)
	3D Biomechanical Analysis System (Mobile) / Myomotion	Noraxon(USA)
	6-Axis Ground Reaction Measurement System / FP4060-07	Bertec Inc.(USA)
	3D Printer for High-Precision Medical Device Prototyping / Projet 6000	3d Systems(USA)
	High-Precision Mobile 3D Scanner/ SmartSCAN HE8	AICON(USA)
	Workstations dedicated to reverse engineering and quality inspection 3d	3d Systems(USA)
	High Performance Moisture Meter / HX204	Mettler Toledo(Switzerland)
	Oximeter / C230H	Labthink(China)
	Thin Film Thickness Gauge / OTG-137	Bristol(USA)
	Bacteriometer / Protos3	Synobiosis(UK)
	Surface Tensiometers / Phoenix-300MT	SEO (Korea)
Scanning Electron Microscope/VEGA 4 LMU	Tescan(Czech Republic)	



For Best Business

Gimhae SME Business Center

Lead Innovative Growth of Small/Medium Businesses of Gimhae

Fostering regional innovative strategic industries by discovering new industries of the future! We try to strengthen the competitiveness of SMEs and revitalize the local economy by creating an entrepreneurial ecosystem to promote startups and job creation.





GBIA
Gimhae SME Business Center

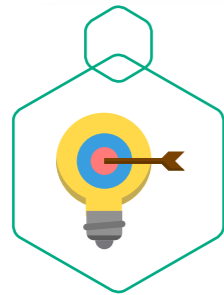
VISION

The center for innovative growth of SMEs in Gimhae City

Fostering strategic industries for regional innovation by identifying future industries

Revitalizing the local economy by strengthening the competitiveness of SMEs

Revitalizing startups and creating jobs by creating an entrepreneurial ecosystem



Fostering strategic industries for regional innovation by identifying future industries

- Policy planning and industry research
- Promoting restaurant franchise startups
- Operating a strategic TF team for the joint public-private content industry
- Demonstration project for joint logistics center for smart medicine in Gimhae City
- Establishing a robot refurbishing center for remanufacturing used robots
- G-Content Testbed Support Project
- Overseeing investment business (fund, accelerating)



Strengthening the competitiveness of SMEs through customized support for sustainable growth

- Support for commercialization and R&D capacity building
- Support for exporters to expand and strengthen their sales channels
- Domestic and international marketing support
- Empowerment of current employees of SMEs



Building a virtuous startup pipeline, nurturing local talent and strengthening recruitment connections

- Gimhae Startup Innovation Center (Metaverse office)
- Gimhae Startup Cafe and Maker Factory
- Technology Startup Center for the Middle-Aged
- Support Center for One-Person Enterprises
- Gimhae Entrepreneurship Academy
- Youth Migration Settlement Support
- Preemptive employment package support
- Local-led youth job support
- Activation of local entrepreneurship (Jinyoung Project)
- Innovation District Project Vocational Education (Human resource development)

Information



Location 80-16 Golden Route-ro (Nongso-ro), Juchon-myeon, Gimhae-si, Gyeongsangnam-do

Area 12,767 m2 of land, 11,774 m2 of gross floor area (1 basement, 5 floors)

Centers

Gimhae City Technology Startup Center for the Middle-Aged

The center provides various support programs for middle-aged technology (pre-)entrepreneurs who are 40 years old or older and have specialized skills in mechanical parts and metal processing. Support programs include but are not limited to free office space, marketing support, and practical startup education.

Business Center for Solopreneurs

The center provides one-stop support for the continuous growth of one-person creative enterprises. The support covers offering office space, expert counseling and management training for startups and management, office equipment and access to facilities.

About current tenants

20 organizations and companies, including the Small and Medium Business Corporation, Gyeongnam Credit Guarantee Foundation, etc.

Facilities

Auditorium capacity of 200 persons

Seminar Room 1 capacity of 20 persons

Seminar Room 3 capacity of 70 persons



GBIA Major Projects of the Gimhae SME Business Center



Gimhae Biomedical Industry Promotion Agency Gimhae SME Business Center

Policy and Industrial Research Planning

- Conduct research on focus areas such as content, food service, investment, etc.
- Plan and run national competitions related to focus areas

Promoting Investments

- Participate in equity funds and run investment and acceleration programs

Content Business

- Support for content idea competitions, youth game academies, and testbeds

Technical Commercialization

- Gimhae-Style Small Business Fostering Project, G-Rising Star Incubating Program, SME Customized Business Distress Support Project

Export Support

- Exporting SMEs Global Market Development Support Project, SMEs Overseas Branching Support Project

Opening Up Markets

- Public market development support, online sales channel expansion support, and sales exhibitions at domestic exhibitions

Startup Support

- Personalized growth support, talent development, and job packages for founders

Online Shopping Mall

- Gimhae City online integrated hopping mall (Gimhae On Mall) entry support, promotion and marketing support, support affiliated with large shopping malls, detailed page production support



GBIA
Major Projects of the Gimhae SME Business Center

Promoting the upgrading of local strategic industries by discovering and fostering the future food industry in Gimhae

Establishing a customized industrial base for Gimhae by discovering focus businesses such as food franchises and content, planning public offering projects, operating fostering projects, and investing in them



01

Project to Promote Restaurant Franchise Startups

Project Title	Project to Promote Restaurant Franchise Startups
Eligible Persons	Pre- and early-stage entrepreneurs in the restaurant franchise area
Business Details	<ul style="list-style-type: none"> Establishing a restaurant franchise TF team and holding regular meetings Operating training courses for restaurant franchise entrepreneurs Support for commercialization to foster Gimhae's representative brands Support for participation in fairs to prepare a foundation for global expansion



02

G-Content Testbed Support Project

Project Title	G-Content Testbed Support Project
Eligible Persons	Founders (prospective) in games and platforms
Business Details	<p>(Ecosystem creation) Holding content idea competitions</p> <p>(Training specialized personnel) Operating a youth game academy</p> <p>(Corporate support) Supporting companies in the field of games and platforms</p> <p>(Event management) Content festival management</p> <p>(Networking) Content industry strategy TF team management</p>



03 Project to Construct and Operate a Makerspace

Project Title	Project to Construct and Operate a Makerspace
Eligible Persons	Pre- and early-stage entrepreneurs in the maker field using Metaverse
Business Details	<ul style="list-style-type: none"> • Metaverse training • Prototyping support for Metaverse and manufacturing founders • Support for Metaverse entrepreneurship (Metaverse Competition, Metaverse Enterprise Roundtable)
 	

04 Demonstration Project for the Gimhae Smart Medicine Joint Logistics Center

Project Title	Demonstration Project for the Gimhae Smart Medicine Joint Logistics Center
Covered Area	Entire area in Busan, Ulsan, and Gyeongsangnam-do
Business Details	<ul style="list-style-type: none"> • Building a smart logistics infrastructure specializing in biopharmaceuticals • Establishing a biopharmaceutical fulfillment system • Building a smart distribution and logistics platform specialized in biopharmaceuticals
Construction Location	1580-4 Gomo-ri, Jinrye-myeon, Gimhae-si, Gyeongsangnam-do (931.51 m ²)

05 Gimhae-Style Acceleration Support Project

Project Title	Gimhae-Style Acceleration Support Project
Eligible Persons	Pre-entrepreneurs and startups in the region
Business Details	<ul style="list-style-type: none"> • IR Consulting support • Holding 2nd Station-G IR Demo Day • Holding monthly pre-IRs • Research to revitalize the investment ecosystem

06 Project to Establish Refurbished Robot Remanufacturing Centers

Project Title	Project to Establish Refurbished Robot Remanufacturing Centers
Eligible Persons	Robot SMEs whose headquarters or factory is located in Gimhae City
Business Details	<ul style="list-style-type: none"> • Establishing a robot refurbishment center to provide comprehensive technical support for robot refurbishment • Establishing performance test and verification equipment, reliability evaluation, etc. • Basic service support platform, technical support for difficulties, etc. • Establishing an exchange system with related companies and establishment/operation of network • Supporting seminars and briefings to expand the dissemination of refurbished technology
Construction Location	1568-4 Gomo-ri, Jinrye-myeon, Gimhae-si (gross floor area 2,475m ²)
 	

07 Fund Investment & Management

■ Project to Create Local Investment Funds

Project Manager	Startup Angel Bridge Investment Fund (Operator: Gyeongnam Creative Economy Innovation Center)		
Equity	6,150 million KRW	Eligible Persons	Local startups and small businesses

■ Bio Startup Accelerating Seed Fund

Project Manager	Next Generation Regional New Deal & Bio Investment Fund (Operator: Gyeongnam Venture Investment)		
Equity	20 billion KRW	Eligible Persons	Local startups and small businesses



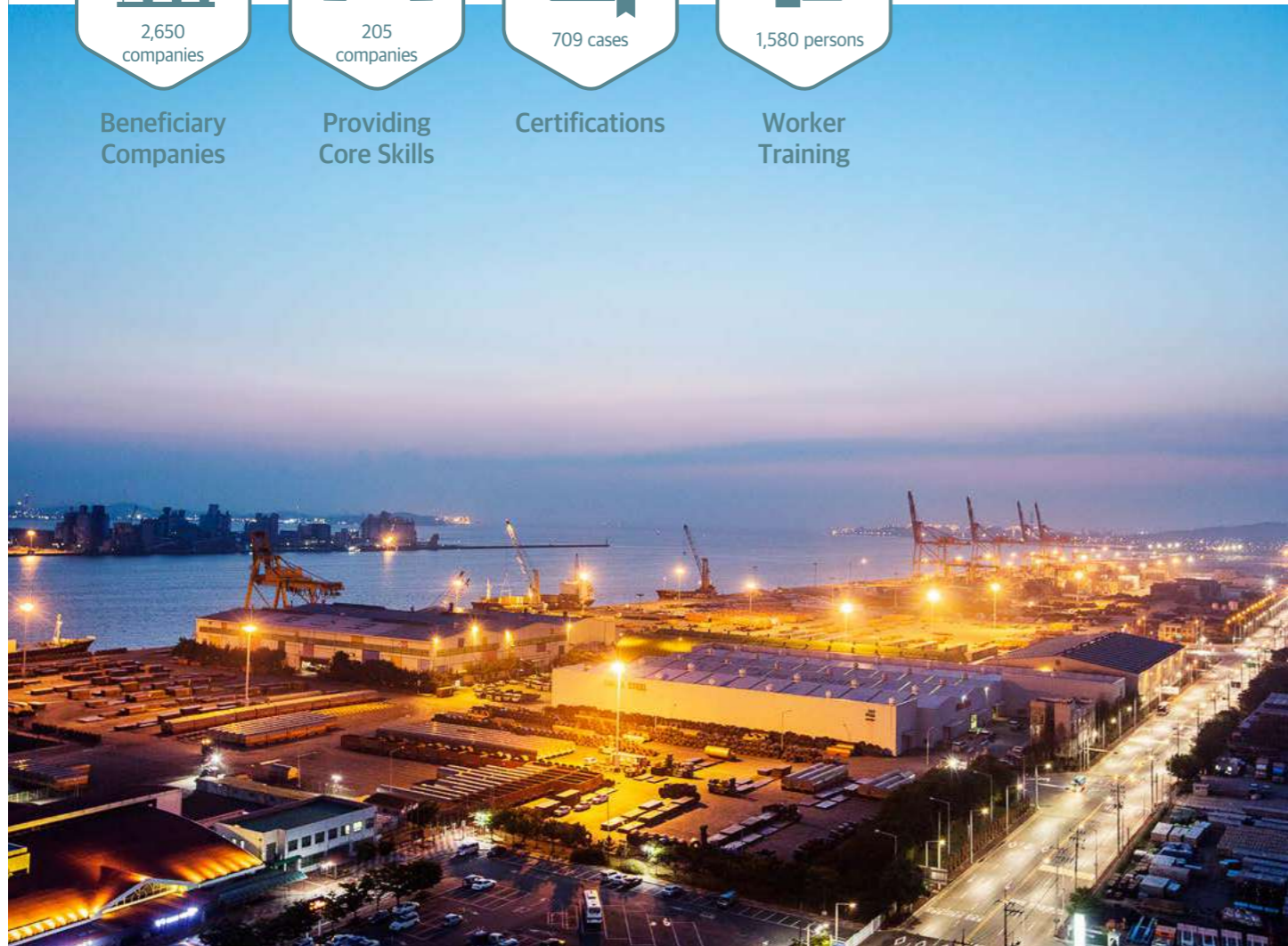
GBIA
Major Projects of the Gimhae SME Business Center

Realizing enterprise innovation and sustainable economic growth

The center identifies policies and projects for the sustainable growth of local SMEs. By doing so, it supports shared growth between micro, small, medium, and large enterprises.



*As of 2022



01 Gimhae-Style Small Business Development Project

Project Title Gimhae-Style Small Business Development Project

- Overview** Securing the center of Gimhae's industrial upgrading and economic growth by supporting local companies with growth potential
- Eligible Companies** SMEs whose headquarters or main business location is in Gimhae, with average sales of more than 2 billion KRW and less than 40 billion KRW in the last three years (S/W companies with more than 500 million KRW).
- Support Provided** Designated funding (50 million KRW) and linked support (financial and institutional support)

02 Project to Incubate G-Rising Star Enterprises

Project Title G-Rising Start Incubating Program

- Overview** Growing the Gimhae industrial economy by discovering and supporting promising small and medium-sized enterprises with growth potential and providing a springboard for Gimhae-type strong and excellent companies
- Eligible Companies** SMEs with less than \$2 billion in revenue whose headquarters are located in Gimhae
- Support Provided** Professional consulting (500 million KRW), commercialization support (10 million KRW)
*Entrepreneurial contribution 3 million KRW

03 Project to Provide Trouble-Shooting Support Customized for SMEs

Project Title Project to Provide Trouble-Shooting Support Customized for SMEs

- Overview** Resolve business issues and boost the competitiveness of SMEs by leveraging a trouble-shoot advisory board
- Eligible Companies** Small and medium-sized enterprises in Gimhae and small business (prospective) founders, etc.
- Support Provided** Solve issues by providing expert advice

04 Gimhae Economic Forum Operation Project

Project Title Gimhae Economic Forum Operation Project

Overview Enhancing the competitiveness of local companies by providing quality lectures on the economy, major policies, industry analysis, and economic trends to help them manage their businesses

Eligible Companies Members of the Gimhae Economic Forum

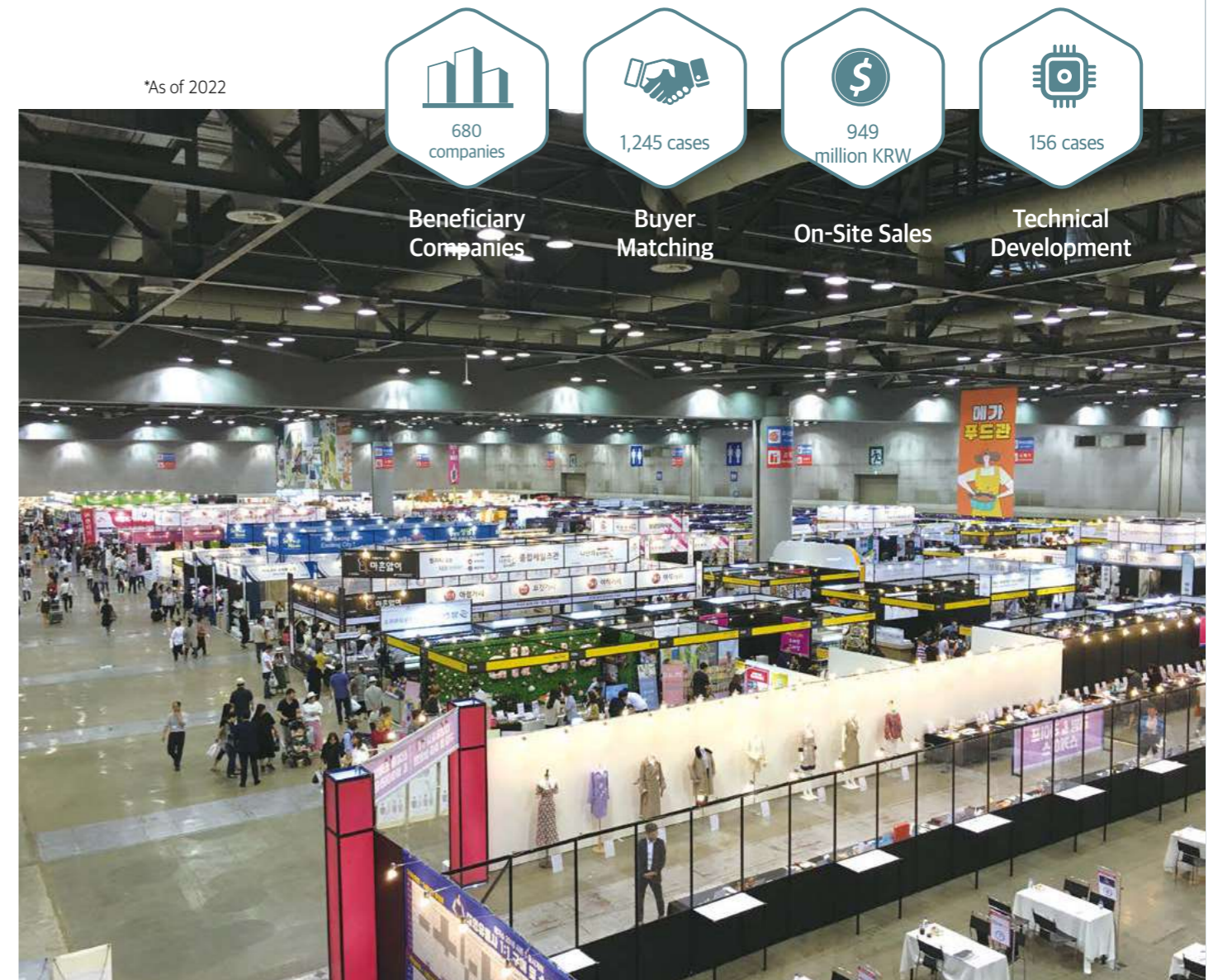
Support Provided Holding economic forums (10 times), strengthening networking among members, etc

05 Other Commercialization and Worker Support Projects

<p>Core Technology-Customized Information Support</p> <p>Provide core domestic and international commercialization information for creative ideas and technologies of SMEs in the region</p>	<p>SME Industrial Certification Cost Support</p> <ul style="list-style-type: none"> Industrial property rights, domestic and international certifications, and international standard management system (ISO) certification Support for certification fees for Inno-Biz, Main-Biz, and Venture companies 	<p>SME Worker Empowerment Project</p> <p>Contribute to improving corporate competitiveness by providing core job skills training such as marketing, R&D planning, and e-bidding to SMEs in Gimhae City.</p>	<p>ESG Management Consulting Support for SMEs</p> <p>Customized ESG management consulting support</p>
-----------------------------------------------------------------------------------------------------------------------------------------------------------------------------------------------------	-----------------------------------------------------------------------------------------------------------------------------------------------------------------------------------------------------------------------------------------------------------------------------------------------------------------------------------------	------------------------------------------------------------------------------------------------------------------------------------------------------------------------------------------------------------------------	--------------------------------------------------------------------------------------------------------------

Sales and Overseas Market Development

We conduct domestic and overseas marketing support projects to develop sales and expand into overseas markets.



01 Project to Support the Global Market Development for Export SMEs

Project Title Project to Support the Global Market Development for Export SMEs

Overview Helping SMEs develop new markets and discover new overseas buyers by having them participate in famous exhibitions overseas concerning Gimhae's main export industries

Eligible Companies Export SMEs in Gimhae City

Support Provided Support for group pavilion participation in famous overseas exhibitions (booth fee, device fee, etc.)

02 Project to Support SME's Overseas Branching

Project Title Project to Support SME's Overseas Branching

Overview Overseas trade officers act as overseas branches and support exporters by conducting market research, finding buyers, and supporting export contracts

Eligible Companies Export SMEs in Gimhae City

Support Provided 80% of the business participation fee, up to a limit of 3 million KRW per company

03 Support for expanding online sales channels

Project Title Support for expanding online sales channels

Overview Discovering outstanding products of SMEs in the region, developing online sales through TV home delivery and e-commerce, and raising corporate awareness

Eligible Companies Gimhae-based consumer goods and food manufacturing companies, direct producers of local specialty products, etc.

Support Provided Online sales entry consulting (entry consultation meeting), TV home shopping broadcast support, online sales marketing training, e-commerce entry support

04 Public Procurement Market Entry Support

Project Title Public Procurement Market Entry Support

Overview Creating a stable supply chain by supporting SMEs in the region to enter the public procurement market and activating public transactions

Eligible Companies SMEs with headquarters in Gimhae based on business license

Support Provided Public procurement market consulting, group booth at public procurement market expos

05 Project to Support Pilot-Sales in Domestic Exhibitions

Project Title Project to Support Pilot-Sales in Domestic Exhibitions

Overview Support for participation in promising domestic exhibitions to provide SMEs with opportunities to analyze consumer response to their products in advance and establish marketing strategies. Also, meetings with domestic and overseas buyers help companies increase and secure sales.

Eligible Companies SMEs that manufacture consumer goods, food products, and finished goods in the region

Support Provided Supporting Busan World Expo 2030 in Gimhae and MegaShow 2023 Season 2 in Gimhae

06 Other Domestic and Overseas Market Development Support Programs

<p>Support for Corporate Promotion Marketing & Design Development</p> <ul style="list-style-type: none"> · Development support for CI/BI, leaflets, catalogs, product detail pages, etc. · Product design, visual and information design, industrial and craft design support, etc. · Support for entry fees for domestic and international design awards 	<p>Short-term Package Support for Product Commercialization</p> <ul style="list-style-type: none"> · Prototyping support for new product development and commercialization · Support for test analysis and certification, IPR applications, and marketing expenses 	<p>SME Export Insurance Premium Support</p> <p>Support for export insurance premiums for exporters in Gimhae to cope with risks such as payment recovery and currency fluctuations</p>	<p>Regional Special Program to Train Youth Trade Professionals</p> <p>Fostering local trade professionals through basic trade-related education and on-the-job training in domestic and international marketing for students at Inje University</p>	<p>Support for Overseas Logistics Costs for Small and Medium-sized Exporters</p> <p>Support for logistics costs for exports via air and sea to respond to logistical difficulties of local exporters due to global supply chain issues</p>
-------------------------------------------------------------------------------------------------------------------------------------------------------------------------------------------------------------------------------------------------------------------------------------------------------------------------------------------------------------------------------------------------------	---------------------------------------------------------------------------------------------------------------------------------------------------------------------------------------------------------------------------------------------------------------------------------------------------	-----------------------------------------------------------------------------------------------------------------------------------------------------------------------------------------------	------------------------------------------------------------------------------------------------------------------------------------------------------------------------------------------------------------------------------------------------------------	---------------------------------------------------------------------------------------------------------------------------------------------------------------------------------------------------------------------------------------------------

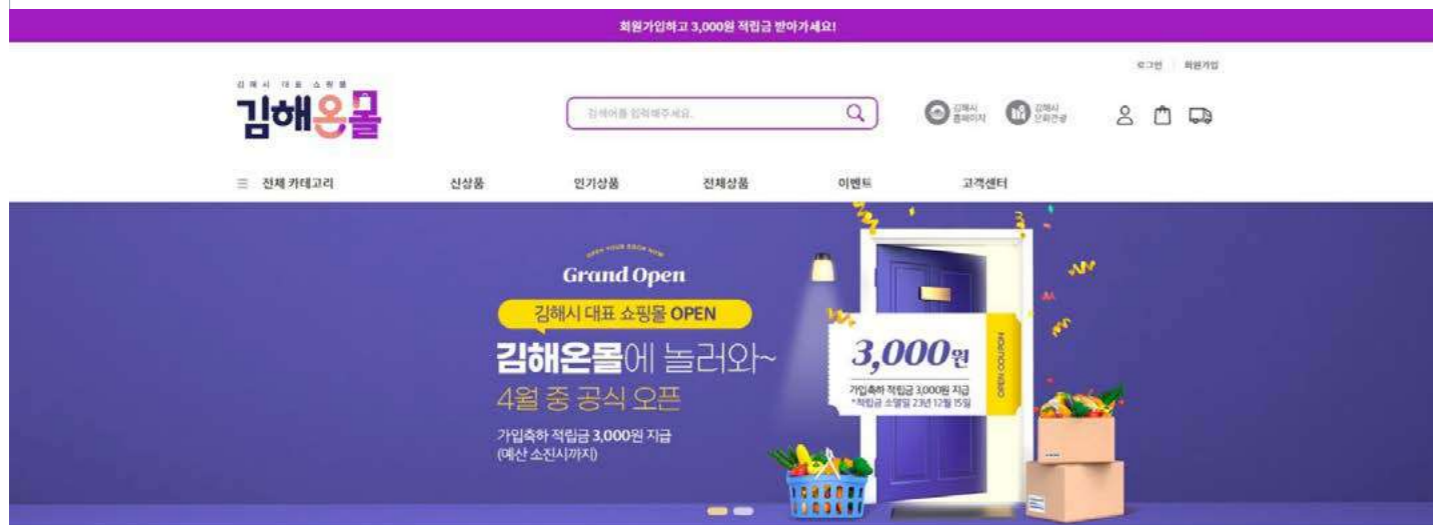


GBIA
Major Projects of the Gimhae SME Business Center

Development of Online Sales Channels for Local Businesses

We discover excellent companies and products in Gimhae and support the development of online sales channels for local companies.

Inquiries : 055-310-9241



01

Gimhae City Online Integrated Shopping Mall Project

Project Title Gimhae City Online Integrated Shopping Mall Project

Overview Providing an online sales channel for companies and small business owners in Gimhae by establishing and operating an online integrated shopping mall, [Gimhaeon Mall]

Project Period May 2022 - (continuously)

Eligible Companies
1. Legitimate mail order businesses located in Gimhae
2. Businesses that have met industry-specific eligibility requirements

Website www.gimhaemall.kr

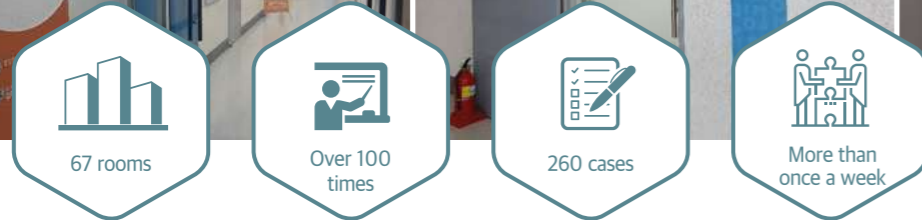
Shopping Mall Name  Gimhae On Mall

<p>Promotion Support</p> <p>Support for holiday and seasonal promotions</p>	<p>Marketing Support</p> <p>Support for promotion through portals and SNS</p>	<p>Support for Shopping Mall Partnerships</p> <p>Support for linking external channels such as large shopping malls</p>	<p>Support for Creating Detail Pages</p> <p>Support for detail page creation and renewal</p>
------------------------------------------------------------------------------------	--------------------------------------------------------------------------------------	--------------------------------------------------------------------------------------------------------------------------------	-----------------------------------------------------------------------------------------------------





GBIA
Major Projects of the Gimhae SME Business Center



* As of 2022

67 rooms
Spaces available for lease

Over 100 times
Annual entrepreneurial training

260 cases
Commercialization support

More than once a week
Mentoring and networking

• Core Programs Focused on the “Six Major Areas of Entrepreneurship Policy”

- 01 Fostering anchor companies**
 - Fostering Gimhae's leading young entrepreneurs
 - Foster mentor companies based on sales / employment
- 02 Online and offline incubating spaces**
 - Activating startup spaces such as business centers and Gimhae Startup Cafe
 - Building and operating live-work spaces with the Metaverse platform
- 03 Professional entrepreneurship training**
 - Customized startup curriculum for each level
 - Promoting local startups
- 04 Creative activities**
 - Activating a maker space
- 05 Workforce training and job support**
 - Employment proactive response package
 - Support for locally driven youth jobs
 - Promoting local entrepreneurship (Jinyeong Project)
 - Innovative District Project for Vocational Education (Human resource development)
- 06 Attracting top offshore companies**
 - Attracting top offshore companies in innovation and new industries

Building a virtuous startup pipeline to spur entrepreneurship and job creation

We expand opportunities for local economic growth and job creation through various startup support policies aimed at creating a leading startup city in the Southeast.

Building a Virtuous Startup Pipeline

Expanding Startup Hubs and Entrepreneurial Culture

- Gimhae Startup Cafe and Maker Factory
- Gimhae Startup Innovation Center
- Operation of G-Meta Town
- Gimhae Startup Academy
- Startup Marketing Enhancement Project
- Jinyoung Project (Urban Regeneration)

Growth Support Customized for Entrepreneurs

- Youth Migration Settlement Support
- Support Center for Solopreneurs
- Technology Startup Center for the Middle-Aged
- Inje University Business Incubating Center

Support for Talent Development and Job Packages

- Employment Proactive Response Package
- Supporting Locally-Driven Youth Jobs
 - Blue Lantern Project
 - Recruitment of decent SMEs
 - Future New Business Youth Hope Challenge
 - Local talent, local revitalization project
- Revitalizing local entrepreneurship (Jinyeong Project)
- Innovation District Project for Vocational Education

Expanding Startup Hubs and Entrepreneurial Culture

- Gimhae Startup Cafe and Maker Factory** | Entrepreneurship education, mentoring, and networking for prospective and early-stage entrepreneurs
- Gimhae Startup Innovation Center** | Gimhae Startup Forum and virtual office business operation
- G-Meta Town (Metaverse space)** | Recruitment and support for Metaverse tenants (companies)
- Gimhae Entrepreneurship Academy** | Commercialization and customized education support for entering / joining companies
- Startup Marketing Enhancement Project** | Customized support for productization and market development

Growth Support Customized for Entrepreneurs

- Youth Migrant Settlement Support Project** | Support for young entrepreneurs' business development and customized training programs
- Support Center for Solopreneurs** | Support for training, commercialization, networking, and space for solo entrepreneurs
- Technology Startup Center for the Middle-Aged** | Education, commercialization, networking, and space support for founders over 40 years old
- Inje University Incubation Centre** | Support for training and consulting at Inje University's incubation center through grant support programs

Support for Talent Development and Job Packages

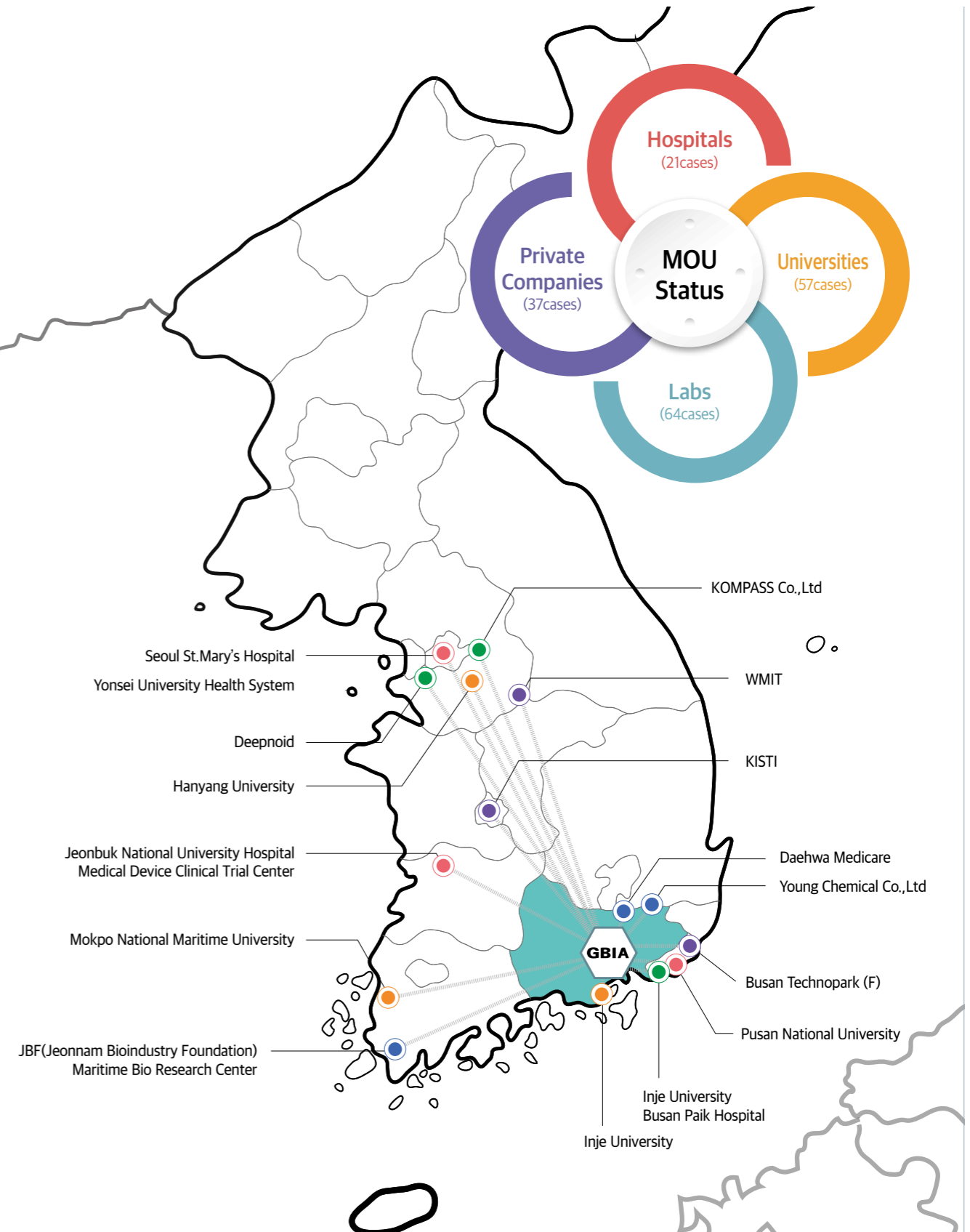
- Employment Preemptive Response Package Support Project** | Supporting companies in crisis industries to secure employment and train specialty welding workers
- Local Initiative for Youth Employment Project** | Support for creating stable employment in local communities to foster local specialized industries
- Local Entrepreneurship Revitalization (Jinyeong Project)** | Support for urban regeneration and small businesses
- Innovation District Project for Vocational Education** | Fostering professional manpower, customized talent development, and job-matching programs



Industry-university-research-hospital collaborations that maximize outcomes and accelerate progress

The Gimhae Biomedical Industry Promotion Agency has built partnerships between leading universities, hospitals, research institutes, and industrial companies. We have signed various agreements to leverage our collaborative research and advanced infrastructure to provide access to biomedical industry-related clinical trials, solutions to technical challenges, and medical device ideas. We are discovering and fostering new businesses and upgrading the industrial structure of Gimhae.

- Hospital** Inje University Busan Paik Hospital, Seoul St. Mary's Hospital, Yonsei Medical Center, Chonbuk National University Hospital, etc. 21 hospitals
- University** Busan National University, Inje University, Mokpo Maritime University, Hanyang University, etc. 57 universities
- Laboratory** Busan Technopark, Jeonnam Biotechnology Industry Promotion Agency Marine Bio Research Center, Korea Institute of Science and Technology Information, Wonju Medical Device Techno Valley, etc. 64 institutes
- Private Organization** Deepnoid, Young Chemical, Daehwa Medicare, Korea Compass, etc. 37 companies



꿈이 이루어지는
따뜻한 행복도시 김해



Gimhae Biomedical Industry Promotion Agency

[50969] Goldenroot St. 80-59 Gimhae 50969, Gyeongnam, Korea
TEL.055-310-1410 Fax.055-310-1499 www.gbia.or.kr